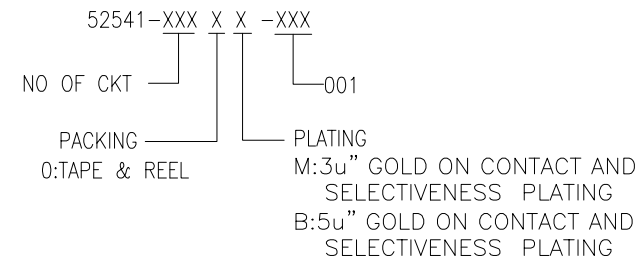


SECTION A-A
SCALE 4:1

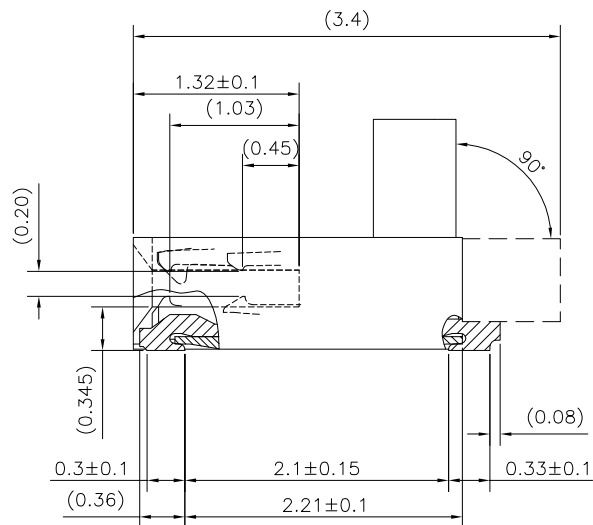
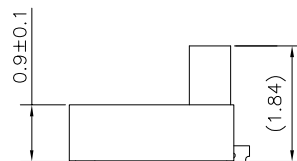
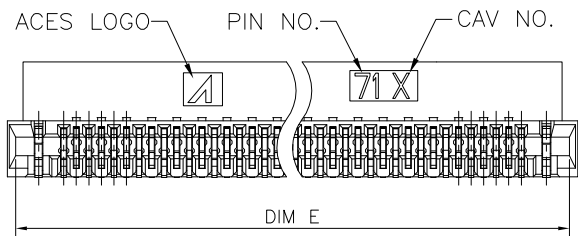
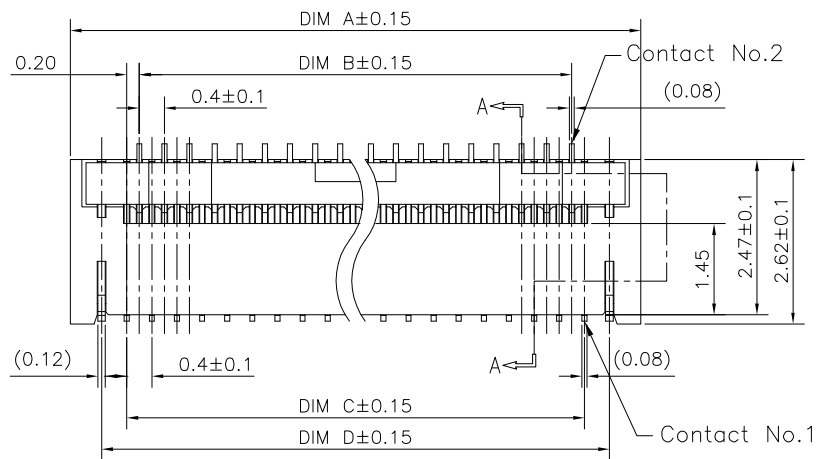
NOTES:

1. MATERIAL:
 - 1.1 HOUSING: HIGH TEMP.UL94V-0;COLOR IS NATURAL.
 - 1.2 ACTUATOR: HIGH TEMP.UL94-0;COLOR IS BLACK.
 - 1.3 CONTACT: COPPER ALLOY
 - 1.4 LOCK PIN: COPPER ALLOY
 2. FINISH:
 - 2.1 CONTACT:
 - M: 50u" MIN NICKEL PLATING OVERALL
 - 3u" MIN. GOLD PLATING ON CONTACT
 - 1u" MIN. PLATING GOLD ON SOLDER POINT
 - B: 50u" MIN NICKEL PLATING OVERALL
 - 5u" MIN. GOLD PLATING ON CONTACT
 - 1u" MIN. PLATING GOLD ON SOLDER POINT
 - 2.2 LOCK PIN:
 - 50u" MIN NICKEL PLATING OVERALL
 - 1u" MIN. PLATING GOLD ON SOLDER
3. SPEC. PLS. REFER TO PS-52541-XXXXX-XXX
4. PACKAGE PLS. REFER TO 52541-XXXXX-XXX-TRP
5. PART NUMBER



CKT	DIM A	DIM B	DIM C	DIM D	DIM E
51	14.80	9.60	10.00	10.80	11.53

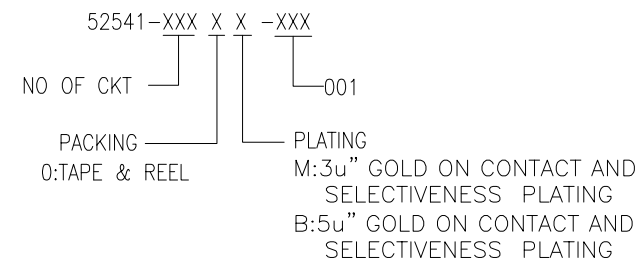
QUALITY SYMBOLS MAJOR Ⓢ CRITICAL Ⓢ GENERAL TOLERANCES (UNLESS SPECIFIED) X. ±0.5 .X ±0.25 .XX ±0.15 .XXX ±0.1 ANGLES ±2°	DRAWN BY Wang, Kai Hung DATE 21/08/20		
	CHECKED BY Liu, Yuan Huang DATE 21/08/20		TITLE 0.2MM PITCH ZIF BACK-FLIP FPC CONN SMT R/A D/C
	APPROVED BY Huang Kuo Hua DATE 21/08/20		
	UNITS mm	SIZE A4	RFO NO. NA
	SCALE 8:1	SHEET NO. 1 OF 3	DWG NO. 52541-XXXXX-XXX



SECTION A-A
SCALE 4:1

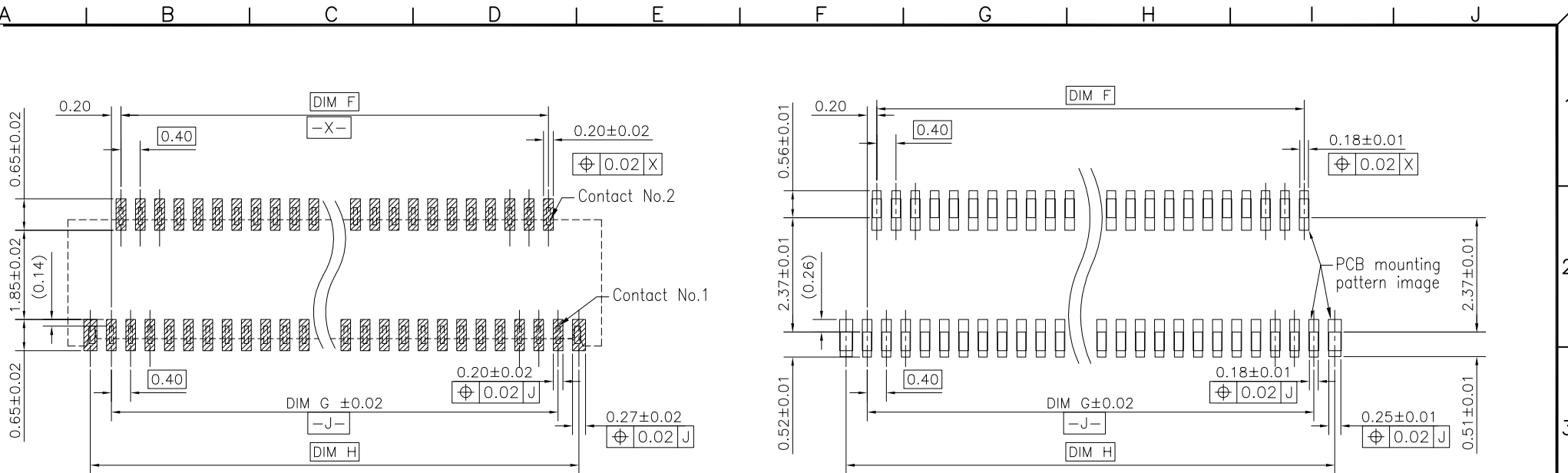
NOTES:

1. MATERIAL:
 - 1.1 HOUSING: HIGH TEMP.UL94V-0;COLOR IS NATURAL.
 - 1.2 ACTUATOR: HIGH TEMP.UL94-0;COLOR IS BLACK.
 - 1.3 CONTACT: COPPER ALLOY
 - 1.4 LOCK PIN: COPPER ALLOY
 2. FINISH:
 - 2.1 CONTACT:
 - M: 50u" MIN NICKEL PLATING OVERALL
 - 3u" MIN. GOLD PLATING ON CONTACT
 - 1u" MIN. PLATING GOLD ON SOLDER POINT
 - B: 50u" MIN NICKEL PLATING OVERALL
 - 5u" MIN. GOLD PLATING ON CONTACT
 - 1u" MIN. PLATING GOLD ON SOLDER POINT
 - 2.2 LOCK PIN:
 - 50u" MIN NICKEL PLATING OVERALL
 - 1u" MIN. PLATING GOLD ON SOLDER
3. SPEC. PLS. REFER TO PS-52541-XXXXX-XXX
4. PACKAGE PLS. REFER TO 52541-XXXXX-XXX-TRP
5. PART NUMBER



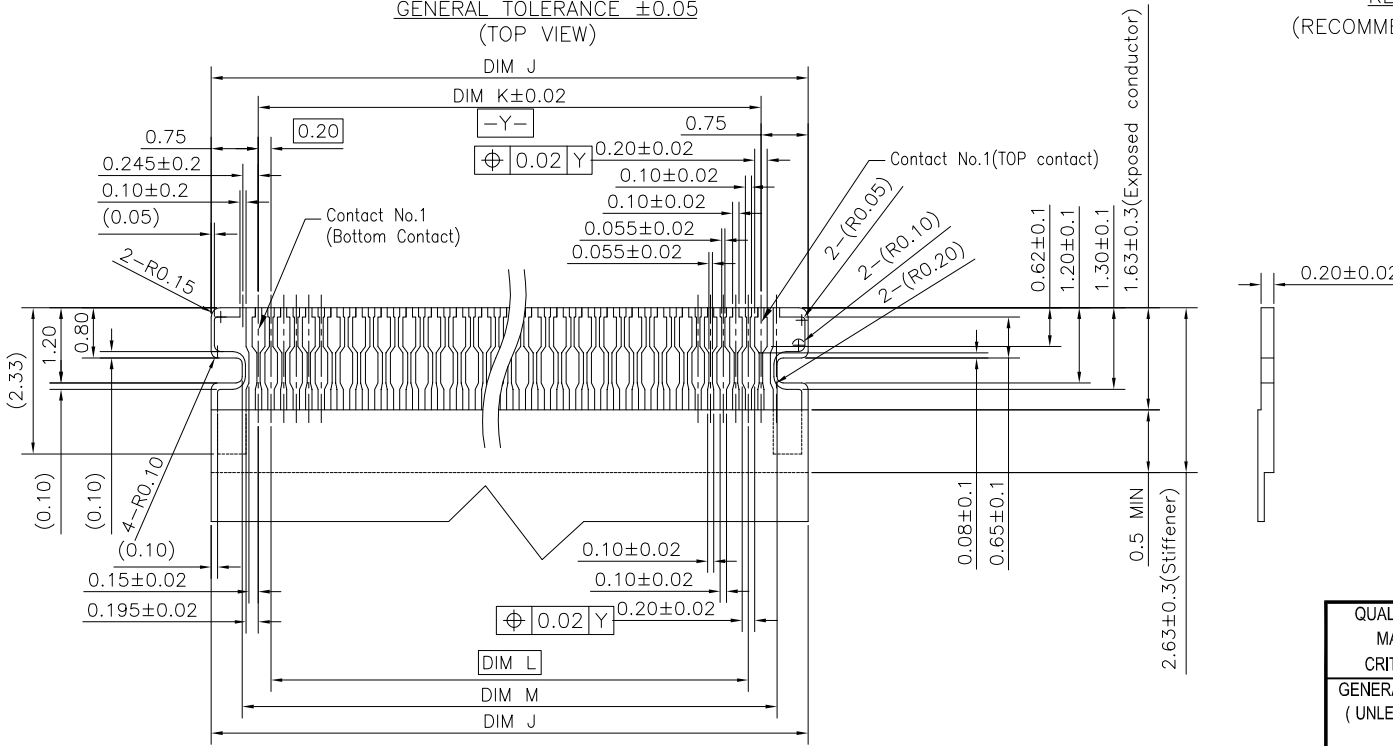
CKT	DIM A	DIM B	DIM C	DIM D	DIM E
71	15.80	13.60	14.00	14.80	15.53

QUALITY SYMBOLS MAJOR Ⓢ CRITICAL Ⓢ GENERAL TOLERANCES (UNLESS SPECIFIED) X. ±0.5 .X ±0.25 .XX ±0.15 .XXX ±0.1 ANGLES ±2°	DRAWN BY Wang, Kai Hung DATE 21/08/20		
	CHECKED BY Liu, Yuan Huang DATE 21/08/20		TITLE 0.2MM PITCH ZIF BACK-FLIP FPC CONN SMT R/A D/C
	APPROVED BY Huang Kuo Hua DATE 21/08/20		
UNITS mm		SIZE A4	RFO NO. NA
SCALE 8:1	SHEET NO. 2 OF 3	REV A	DWG NO. 52541-XXXXX-XXX



RECOMMENDED PCB LAYOUT
GENERAL TOLERANCE ± 0.05
(TOP VIEW)

RECOMMENDED STENCIL PATTERN
(RECOMMENDED STENCIL THICKNESS $t=0.1\text{mm}$)



APPLICABLE FPC RECOMMENDED DIM
(GENERAL TOLERANCE: $\pm 0.05\text{mm}$)

CKT	DIM F	DIM G	DIM H	DIM J	DIM K	DIM L	DIM M
51	9.60	10.00	10.87	11.50	10.00	9.60	10.51
71	13.60	14.00	14.87	15.50	14.00	13.60	14.51

QUALITY SYMBOLS MAJOR ⊕ CRITICAL ⊗	DRAWN BY Wang, Kai Hung	DATE 21/08/20	
	CHECKED BY Liu, Yuan Huang	DATE 21/08/20	
GENERAL TOLERANCES (UNLESS SPECIFIED) X. ± 0.5 .X ± 0.25 .XX ± 0.15 .XXX ± 0.1 ANGLES $\pm 2^\circ$	APPROVED BY Huang Kuo Hua	DATE 21/08/20	TITLE 0.2MM PITCH ZIF BACK-FLIP FPC CONN SMT R/A D/C
	UNITS mm		SIZE A4
SCALE 8 : 1	SHEET NO. 3 OF 3	REV A	DWG NO. 52541-XXXXX-XXX